



Welcome House

2022

ANNUAL GRATITUDE REPORT



Dear Friends of Welcome House -

Anyone on the journey of recovery has likely left a trail of regrets.

Suffice to say, our work at Welcome House is an opportunity for men to forge a new path. To emerge from darkness, shame, and unworthiness. To break through whatever stands in the way of their true potential.

Addiction is a disease. It's not something anyone chooses. And like mental illness, which often accompanies addiction, it can be difficult to see one's way out alone, especially when faced with the stigma of addiction. But the good news is, more than ever before, people are embracing evidence-based treatment. Empathy is growing and with it an understanding that **we need to combat the disease - not the sufferer.**

Within these pages of *The Journey*, you'll discover the many ways Welcome House is doing just that. You'll also find our 2022 Annual Gratitude Report - a summary of the many positive outcomes and achievements of the past year - all made possible by our kind and generous community that continues to nurture our mission.

As you can imagine, we're thrilled to be celebrating our 10th Annual Welcome House Breakfast as well as the completion of our new Welcome House Recovery Center later this year - all signs of our community's hope and confidence in the future of recovery.

As we look to this year of growth and new beginnings, we're grateful for every seed of hope and the progress your support makes possible.

Gratefully,



Jamie Boyle
President & CEO



**A SEED
OF HOPE**
*lies in our addiction.
Dropped in dirt,
covered in darkness,
our struggle
reveals the light
of recovery.*



VISIT

1414 E. 27th Street
Kansas City, MO 64108

816.472.0760



SHARE

Welcome House relies on the generosity of our caring community to fulfill our life-saving mission!

Your one-time or recurring gift makes a meaningful difference!

CONNECT

Learn more about [recovery services](#).

Learn about [volunteer opportunities](#) and other ways to support our mission.

WELCOMEHOUSEKC.ORG

RECOVERY FOR LIFE

A Community Campaign for a new Welcome House Recovery Center

The new Welcome House Recovery Center is a residential facility that will allow Welcome House to serve more men, expanding from 80 to over 100 beds. The center will house classrooms, offices, computer lab, spiritual space, and wellness and engagement spaces. Outdoor features include a basketball court, recreational, and gathering areas.

Completion of the facility is anticipated later this summer.



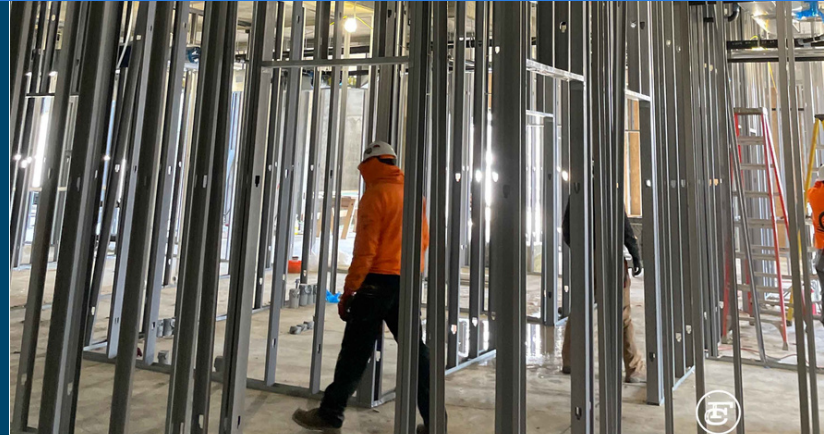
Our community needs
Welcome House.

Welcome House
needs our community.

EVERY GIFT COUNTS

The Recovery for Life Campaign is a \$13.5 million endeavor to build a new Welcome House Recovery Center on our current site in Kansas City, MO.

To-date, generous individuals, foundations, and businesses have contributed \$10.5+ million to the campaign. We continue to reach far and wide to raise the total amount. Please consider a one-time gift or pledge to help us reach our goal!




Learn more or share a gift@
WelcomeHouseKC.org

20 ANNUAL 22 GRATITUDE REPORT

226^{DAYS}

AVERAGE LENGTH OF STAY FOR GRADUATES OF WELCOME HOUSE CORE RECOVERY PROGRAM.

88% 

OCCUPANCY RATE IN 2022 - A RATE THAT HAS STEADILY INCREASED OVER THE LAST THREE YEARS SINCE THE PANDEMIC.

400

RESIDENT INTAKES IN 2022 - A 21% INCREASE OVER 2021 AND A 39% INCREASE OVER THE LOW OF 288 INTAKES IN 2020 DUE TO THE PANDEMIC.

468

RESIDENTS SERVED IN 2022 COMPARED TO 385 IN 2021.



AVERAGE AGE THAT MOST WELCOME HOUSE RESIDENTS FIRST USED ALCOHOL.

14

1460

NUMBER OF 12-STEP RECOVERY MEETINGS HELD ON-SITE FOR WELCOME HOUSE RESIDENTS AND OTHERS IN THE COMMUNITY.



212%

INCREASE IN RESIDENT EMPLOYMENT RATE AT DISCHARGE (81%) COMPARED TO EMPLOYMENT RATE AT INTAKE (26%).

1548

REFERRALS TO 55 AGENCIES IN THE COMMUNITY FOR A VARIETY OF SERVICES AND ASSISTANCE.



Welcome House

1879

DRUG TESTS (EXCLUDING NEGATIVE BREATHALYZER TESTS) ADMINISTERED TO RESIDENTS. OF THESE DRUG TESTS, 70% ARE NEGATIVE.

85%

RESIDENTS HAVE ANNUAL INCOME LESS THAN \$10,000 AND 54% ARE UNINSURED.

13%

RESIDENTS WHO REQUIRE MEDICATION ASSISTED TREATMENT (MAT).

partners

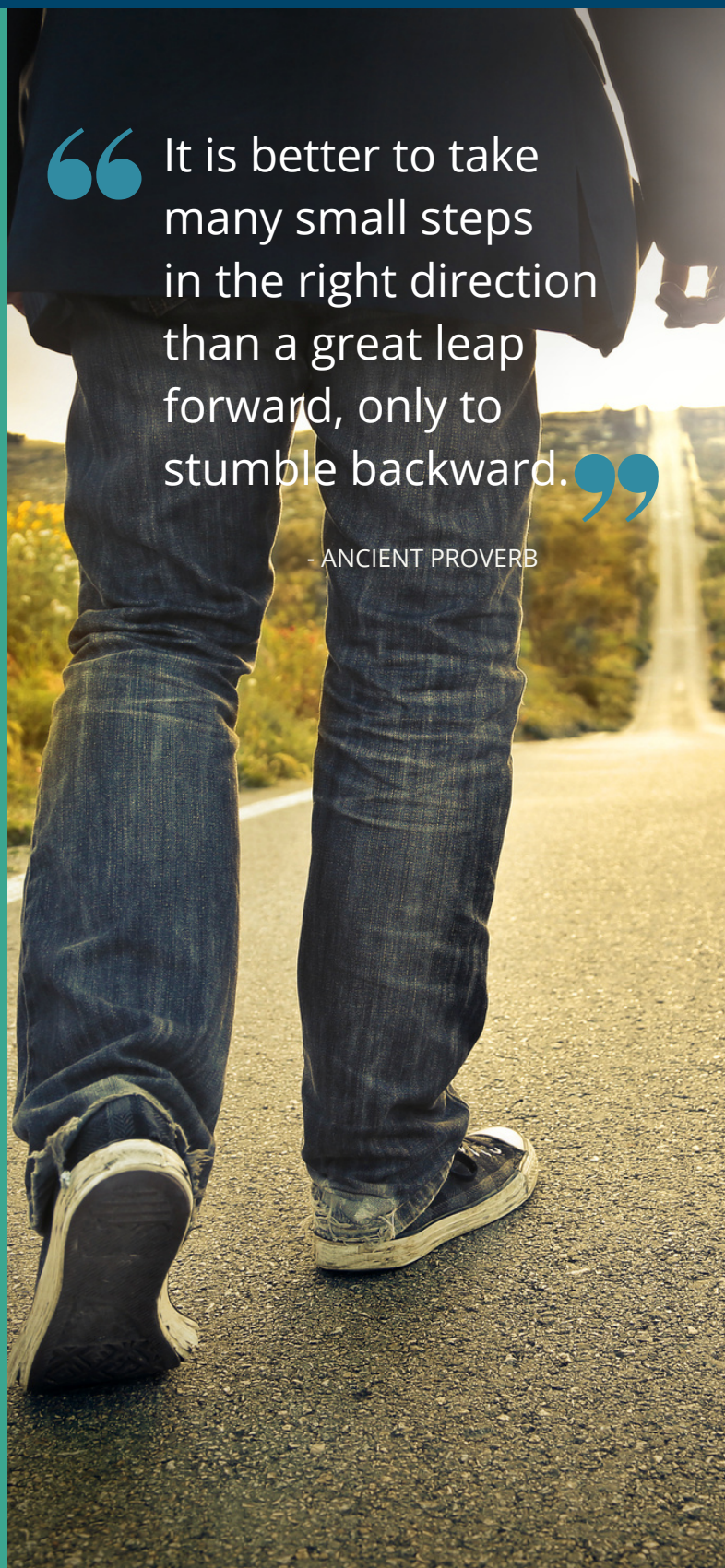
TOP REFERRAL PARTNERS INCLUDE SWOPE HEALTH CENTER, SAMUEL RODGERS, KC CARE CLINIC, UNIVERSITY HEALTH, RESEARCH PSYCHIATRIC CENTER, REDISCOVER, COMPREHENSIVE MENTAL HEALTH SERVICES.

59%

RESIDENTS WITH SUBSTANCE USE DISORDER OF BOTH DRUGS AND ALCOHOL.

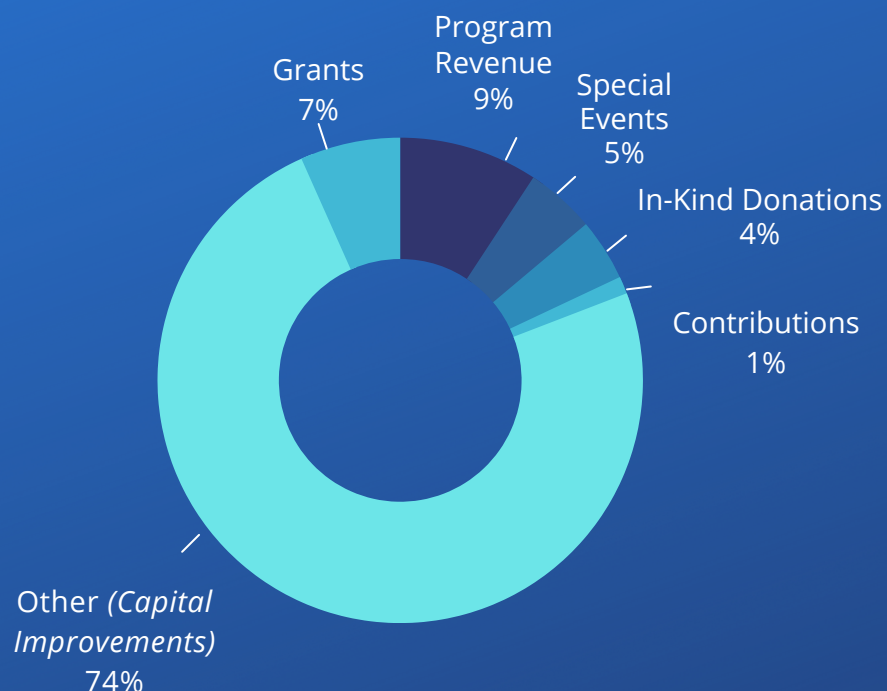
“It is better to take many small steps in the right direction than a great leap forward, only to stumble backward.”

- ANCIENT PROVERB

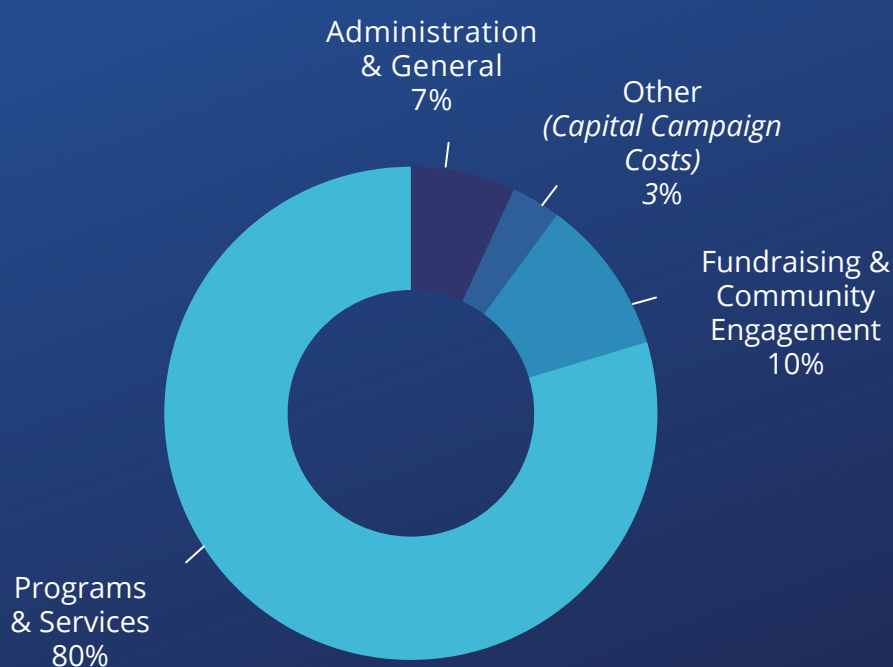


2022 FINANCIAL OVERVIEW

CONTRIBUTIONS & REVENUE



COMMUNITY BENEFIT/EXPENSES



CONTRIBUTIONS & REVENUE

Program Revenue	\$659,394
Special Events	\$330,297
In-Kind Donations	\$294,699
Grants	\$476,229
Contributions	\$82,580
Other (Investment and Capital Campaign Income)	\$5,292,489

Total Income **\$7,135,688**

EXPENSES

Administration & General	\$130,270
Programs & Services	\$1,513,389
Fundraising & Community Engagement	\$194,352
Other (Capital Improvements)	\$61,599
Total Expenses	\$1,899,610
2022 Net Increase in Net Assets*	\$5,236,078

*Net increase in net assets reflects restricted funds designated for capital improvements to be expended in 2023 construction.



**PROGRESS
OVER
PERFECTION.**

THE QUESTION ISN'T HOW TO BE CURED BUT HOW TO LIVE!



CEO Jamie Boyle at the Welcome House Recovery Center groundbreaking ceremony.



Tom Watson (center) with Miracle Award Honorees Kent Sunderland and Randy Vance.



The annual Welcome House BBQ is a time of fellowship for residents, alumni, and friends.



Paint ball escapades with Team Welcome House!



Always a hit!: Trickshot artist Patrick "Paddy Whack" Cocherl at the Swing Fore Recovery Golf Classic.



Valued supporters and guests got an up-close hard hat tour of the recovery center site in late 2022.

2023 WELCOME HOUSE BOARD OF DIRECTORS

John Wendorff, *Chairman*
David Kissick, *Vice-Chair*
Ed Walsworth, *Treasurer*
Ryan Shriver, *Secretary*
Jamie Boyle, *President & CEO,*
ex-officio
Grant Baumgartner

Randy Curnow
Keith Faison
Sara Jackson
Brian Johnson
Rich McArdle
Rev. Dr. Ted Pierce
Cati Pierson Wolfe

BOARD OF ADVISORS
Joe Cashen
Robin Cunningham
John Hungerford
Frank Martin
Dr. Heather Hale Rosburg
Susan Whitmore





RECOVERY PROGRAMS AT WELCOME HOUSE

Connect: Lay Counseling or Recovery Coaching Program & Meeting Leaders

Works: Emergency Employment and Rehabilitative Jobs Program

University: Educational, Instructional and Rehabilitative Content Program

Thrive: Resident Aftercare Program & Alumni Fellowship

Restore: Family and Support System Program

Healthy Recovery: Health, Wellness and Nutrition

Core Plus: Recovery Leadership Residency & CPS Certification

To get the full picture of recovery at Welcome House is to look at the unique and holistic needs of each resident. This coordinated care approach helps each man identify his strengths and growth areas on which to build a new and productive life in sobriety.

It's when we start
working together that
**THE REAL HEALING
TAKES PLACE.**



WELCOMHOUSEKC.ORG