

SUMMER • 2021

the journey

A CONNECTION TO FRIENDS, SUPPORTERS
AND RESIDENTS OF WELCOME HOUSE

LET'S DO THIS!

Now more than ever, our community needs Welcome House and
Welcome House needs our community!

RECOVERY FOR LIFE

A Community Campaign for a new
Welcome House Recovery Center

Welcome House announced the public phase of its Recovery for Life Community Campaign on June 30th at the 8th Annual Welcome House Breakfast.

The campaign makes way for a new 28,000 square foot Welcome House Recovery Center to be built on our existing property. The expanded facility will allow Welcome House to serve 30% more men in a building designed for therapeutic and rehabilitative interventions, recovery meetings, individual counseling, dedicated classrooms as well as spirituality, meditative, socialization and family spaces.

The new Welcome House Recovery Center will be a place of welcoming and acceptance in a modernized facility that supports our vital work.

To date, over \$2 million dollars has been given or pledged by the Welcome House Board of Directors and individuals; over \$4 million dollars by private foundations and trusts; and \$500 thousand from the public sector.

Key to our success is a generous challenge from the J.E. and L.E. Mabee Foundation that will award \$2M in funding when an additional \$3M dollars is raised by April 13, 2022.

"If ever there was a time for the community to share its support, this is it!" says President and CEO Jamie Boyle.

- Read more on the back panel.

20 ANNUAL 20 REPORT SPECIAL EDITION



Miracle Award 2021



2021 MIRACLE AWARD
HONOREE TOM WATSON
(RIGHT) WITH SUGAR RAY
LEONARD (LEFT).

The legendary Tom Watson, a long-time friend of Welcome House, is this year's Miracle Award honoree. Presented to an individual who exemplifies the true spirit of Service to Others in Sobriety, Tom has given generously of his time, resources, and advocacy for Welcome House. We're grateful for his kindness and commitment of so many years!



*Rendering of the new
Welcome House
Recovery Center to be
constructed on the
current Welcome
House property.*



a bend in the road
**IS NOT THE END
OF THE ROAD
UNLESS WE FAIL TO
MAKE THE TURN.**

Dear Friends of Welcome House -

2020 sent us down some long and winding roads.

As Welcome House went face-forward into a pandemic with the rest of the world, we did what many of us in recovery do when the going gets tough: *we hung on*. We rode out the storm. We lived in faith and leaned on each other. Together we navigated the bends in the road with courage and resolve.

Countless gestures of resilience happened each day, with our team taking every measure possible to ensure our residents and staff were safe. It was no small feat to come through a full-on pandemic with only one confirmed case of COVID in a residential facility, *but we did it!* And we're even more grateful that the case was quickly isolated and our resident made a healthy recovery. You'll read about this and other highlights in our 2020 annual report included in this issue.

It is not the story we imagined telling this month alongside our 50th Anniversary and our Recovery For Life Capital Campaign. But the roads we've traveled over the last half century have prepared us for what's over the horizon: a future filled with hope that we cannot wait to share with you!

From all of us at Welcome House, we thank you for walking beside us since 1971. Your support and encouragement mean the world to us!

Sincerely,

Jamie Boyle
President & CEO

Happy 50th Anniversary,
Welcome House!
August 17, 2021



VISIT

1414 E. 27th Street
Kansas City, MO 64108

816.472.0760



SHARE

Welcome House relies on the generosity of our caring community to fulfill our life-saving mission!

Your one-time or recurring gift makes a meaningful difference!

» DONATE TODAY!

CONNECT

Learn more about [recovery services](#).

Learn about [volunteer opportunities](#) and other ways to support our mission.

WELCOMEHOUSEKC.ORG

RESILIENCE IN RECOVERY



Welcome House

20 ANNUAL 20 REPORT

As the COVID-19 pandemic peaked in 2020, Welcome House protected the well-being of residents, staff, and volunteers by significantly implementing rigorous health and safety protocols in compliance with CDC guidelines and local ordinances.



This meant restricting the number of resident admissions as well as the number of individuals allowed to gather. We supported resident recovery by scheduling smaller but more frequent daily recovery meetings and invested in technology to provide virtual meetings and other supportive resources. We also ensured all residents had access to vaccinations.

THE COVID EFFECT



3

COVID TESTING
EVENTS WERE HOSTED
ON-SITE FOR ALL
RESIDENTS AND
STAFF.



one

COMPREHENSIVE SAFETY
PROTOCOLS RESULTED IN ONLY ONE
CONFIRMED CASE OF COVID
RESULTING IN IMMEDIATE
QUARANTINE AND RECOVERY.

300%



INCREASE IN RESIDENT
EMPLOYMENT RATE AT
DISCHARGE (64%)
COMPARED TO
EMPLOYMENT RATE AT
INTAKE (16%).



63%



OCCUPANCY RATE IN 2020
COMPARED TO 95% IN 2019 AND
2018, ANOTHER RESULT OF
RESIDENCY LIMITATIONS DURING
THE PANDEMIC.



288

RESIDENT INTAKES IN
2020 COMPARED TO 460
IN 2019 DUE TO COVID
RESTRICTIONS.

363

RESIDENTS SERVED IN 2020
COMPARED TO 535 IN 2019,
A RESULT OF ADMISSIONS
RESTRICTIONS MANDATED
DURING THE PANDEMIC.



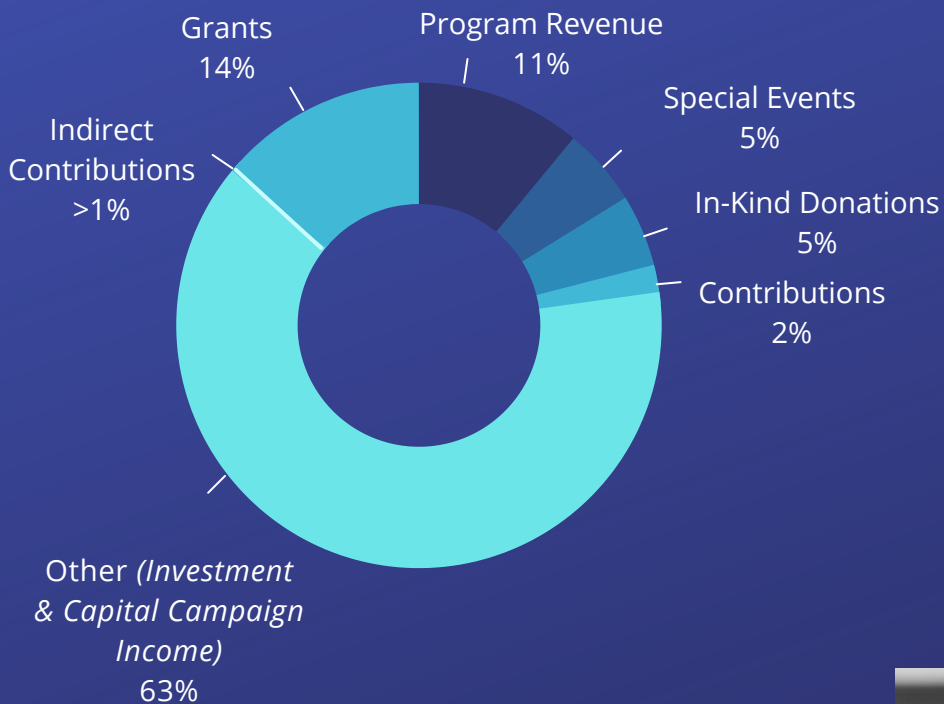
7



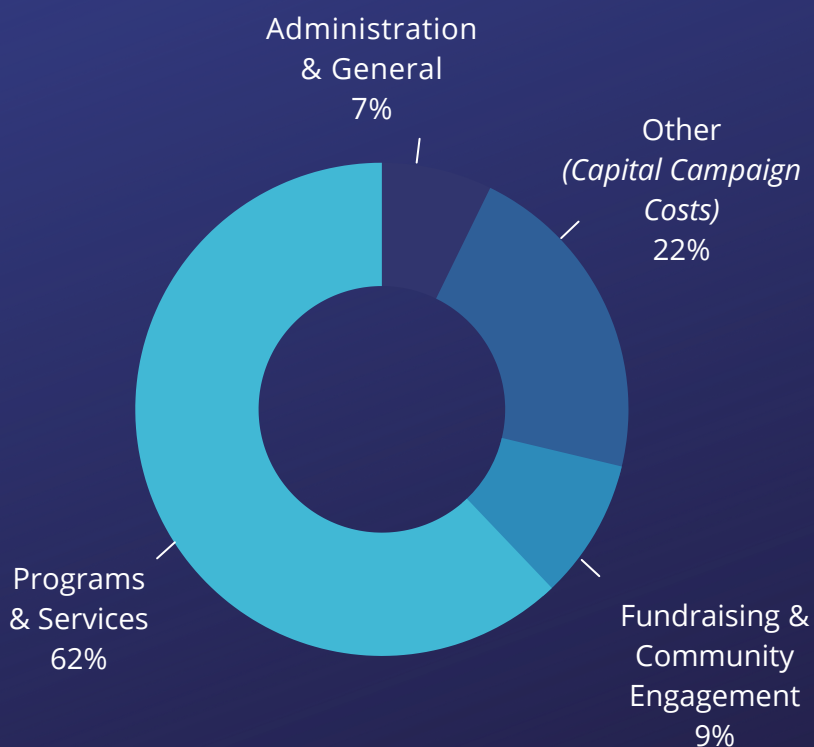
THE AVERAGE INCREASE IN THE
NUMBER OF DAYS RESIDENTS
REMAINED IN THE PROGRAM IN
2020 COMPARED TO 2019.

2020 FINANCIAL OVERVIEW

CONTRIBUTIONS & REVENUE



COMMUNITY BENEFIT/EXPENSES



CONTRIBUTIONS & REVENUE

Program Revenue	\$441,157
Special Events	\$209,178
In-Kind Donations	\$192,633
Grants	\$561,270
Contributions	\$73,167
Indirect Contributions	\$901
Other (Investment and Capital Campaign Income)	\$2,540,317

Total Income **\$4,018,623**

EXPENSES

Administration & General	\$135,687
Programs & Services	\$1,163,381
Fundraising & Community Engagement	\$171,850
Other (Capital Campaign Costs)	\$402,364
Total Expenses	\$1,873,282
2020 Net Increase in Net Assets	\$2,145,341

**Above reflects unaudited financial data.*



**THE DIAMOND
CANNOT BE POLISHED
WITHOUT FRICTION,
NOR THE PERSON PERFECTED
WITHOUT TRIALS.**

WHO & WHY WE SERVE OUR RESIDENTS

Welcome House serves men from all walks and, though each journey is unique, there are commonalities among our residents. A desire to live a life free of alcohol and drugs. A longing to reconnect with family and friends. A hope that, in sobriety, life will be enriched with purpose and in service to others.



THE OPPOSITE OF ADDICTION
IS NOT SOBRIETY,
BUT HUMAN CONNECTION.



ten

THE AVERAGE NUMBER
OF YEARS RESIDENTS
HAVE USED DRUGS.

<\$10,000

AVERAGE YEARLY
EARNINGS FOR ABOUT
85% OF RESIDENTS.

12+

NUMBER OF AGENCIES REFERRING MEN
TO WELCOME HOUSE FOR PROGRAM
SERVICES. THIS INCLUDES TRUMAN
MEDICAL CENTERS, SWOPE HEALTH
CENTER, CATHOLIC CHARITIES, AND
LEGAL AID OF WESTERN MISSOURI.

83%



RESIDENTS
WHO ARE
UNINSURED.

25%

RESIDENTS WHO
HAVE BEEN
INCARCERATED.



8%

RESIDENTS REQUIRING MEDICATION
ASSISTED TREATMENT (MAT), THE USE OF
MEDICATIONS IN COMBINATION WITH
COUNSELING AND BEHAVIORAL
THERAPIES TO PROVIDE A "WHOLE-
PATIENT" APPROACH TO TREATING
SUBSTANCE USE DISORDERS.

14

AVERAGE AGE AT
WHICH MOST
RESIDENTS FIRST
USED ALCOHOL.

712



NUMBER OF REFERRALS WELCOME
HOUSE MADE TO 59 LOCAL AGENCIES
SO RESIDENTS AND COMMUNITY
MEMBERS MAY SEEK ADDITIONAL
SERVICES AND SUPPORT.

2020 WELCOME HOUSE BOARD OF DIRECTORS

Rich McArdle, *Chairman*
Grant Baumgartner, *Vice Chairman*
John Wendorff, *Treasurer*
Susan Whitmore, *Secretary*
Jamie Boyle, *President & CEO, ex-officio*

Katie Castro
Randy Curnow
Dr. Heather Hale Rosburg
David Kissick
Rev. Dr. Ted Pierce
Ryan Shriver

BOARD OF ADVISORS
Joe Cashen
Robin Cunningham
John Hungerford
Frank Martin

WHY A NEW WELCOME HOUSE RECOVERY CENTER?

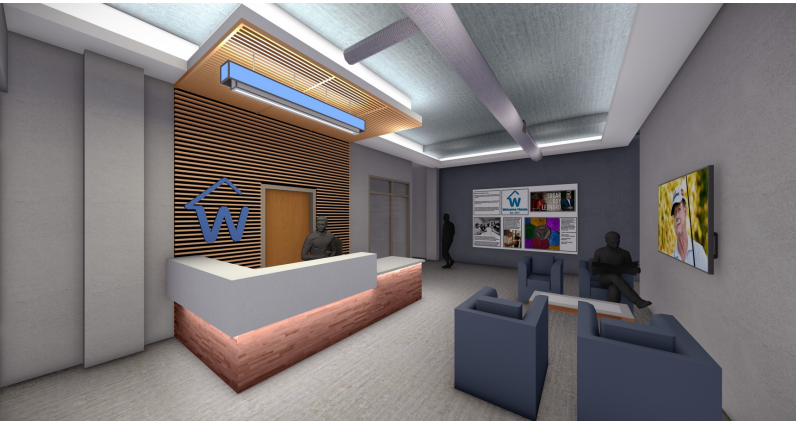
Our community needs an expanded Welcome House Recovery Center and the time is now!

According to a University of Kansas Study, *Towards a More Responsive Substance Use Disorder Continuum of Care: Kansas*

RECOVERY FOR LIFE

A Community Campaign for a new Welcome House Recovery Center

Rendering of the reception area of the new Welcome House Recovery Center.



City Metropolitan Area 2018 Needs Assessment, the shortage of long-term recovery beds in the greater Kansas City area is acute and demand for services far exceeds current capacity. Likewise, Welcome House for several years has operated at capacity and frequently has a waitlist for admission.

When individuals are ready to move from medical detoxification or hospital inpatient settings into residential care settings, there is often nowhere for them to go.

When this happens, the individual is highly vulnerable and prone to relapse. The new Welcome House Recovery Center will replace our deteriorating, century-old building with a modernized residential facility designed especially for therapeutic resident care. The facility will feature classrooms, offices, computer lab, chapel, and wellness and community engagement spaces. Outdoor spaces will include a basketball court, recreational, and gathering areas.

To learn more, visit WelcomeHouseKC.org.



9.27.2021

Canyon Farms Golf Club
Lenexa, KS

AdventHealth
Shawnee Mission



Courtney Chapman
Event Chair



Join us for the 4th Annual
Swing Fore Recovery Golf Classic

- All-new course!
- Sunshine, Friends & Contests
- Celebrity Golfers (snag one for your team!)
- Food, Fun, Swag!
- All for a great cause!

Register today at WelcomeHouseKC.org