

the journey

summer • 2025

A CONNECTION TO FRIENDS, SUPPORTERS AND
RESIDENTS OF WELCOME HOUSE

ROCK & RECOVERY: ART ALEXAKIS INSPIRES AT THE 12TH ANNUAL WELCOME HOUSE BREAKFAST!



The 12th Annual Welcome House Breakfast on April 23rd was a meaningful gathering that showcased the strength of community, where hope and recovery took center stage. With more than 1,000 guests in attendance, the event featured an inspiring keynote by Art Alexakis, frontman of Everclear, who shared his personal journey of addiction, recovery, and purpose.

A heartfelt thank you to all who helped make this record-breaking event possible—and for your continued support of the Welcome House mission!



We're especially grateful to Presenting Sponsors AdventHealth and Cumulus, and to the table captains whose leadership helped raise over \$300,000 to support men on the road to recovery.

Skid Roadie led powerful and heartfelt conversation with Art, exploring the role of creativity in healing. The program was brought to life by the incredible John Holt, who served as our emcee, and an appearance by golf legend Tom Watson, whose presence underscored the far-reaching support of our mission.



It was a morning of powerful recovery stories from Welcome House residents, the recognition of devoted supporters, and a moving celebration of the community that helps make transformation possible.



PRESIDENTS MESSAGE

RECOVERY IS REAL, IT'S HAPPENING RIGHT HERE.

Dear Friends of Welcome House,

Recovery is not just a concept. It's not something that only happens in books, movies, or faraway places. It's real, and it's happening every single day within the walls of Welcome House.

We see men arrive at rock bottom, unsure if change is even possible. What follows is nothing short of remarkable. With structure, support, and accountability, lives are rebuilt, family bonds repaired, hope becomes reality, and purpose is rediscovered.

This kind of transformation doesn't happen in isolation. It's made possible by community, by people like you who believe everyone deserves the chance to recover with dignity. Your support allows us to provide safe housing, peer-led programming, and a structured path to recovery for men facing the complex challenges of substance use disorder.

Inside this issue of The Journey, you'll find our 2024 Annual Gratitude Report, along with reflections on the work we've done, the challenges we continue to face, and the powerful role community plays in breaking down barriers to recovery.

It's hard to believe we've now been operating in our new facility for nearly two years. While it may no longer feel "new" to us, for the men walking through our doors, it still represents something extraordinary, a fresh start. Our Recovery Center has become a place of stability, progress, and second chances. It stands as a daily reminder of what's possible when we come together in support of a common purpose.

Thank you for your continued partnership and belief in this mission.

Jamie Boyle
President & CEO

[WELCOMEHOUSEKC.ORG](https://www.welcomehousekc.org)
Learn more about all things Welcome House

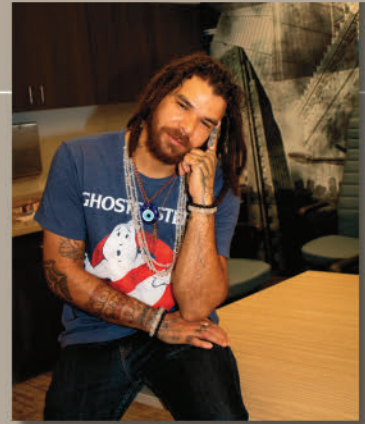
THE REAL FACES OF RECOVERY

Most of us grew up with the same picture in mind: the “addict” who sleeps under a bridge, the person society has written off. That image is powerful, but it is mostly fiction.

Look closer. Substance use disorder wears a baseball cap at your son’s Little League game. It runs the register at your grocery store. It sits beside you in Sunday service and stands behind you in the school pickup line. It is a father who never learned another way to manage buried trauma, a neighbor who took one prescription too many after surgery, a coworker who held everything together until he simply could not. These men do not want pity. They want a path back.

Recovery is that path. At Welcome House, men learn how to rebuild trust, re-enter the workforce, return to their families, learn to live a life with purpose. When one person recovers, children regain a parent, employers gain a reliable team member, and communities gain a mentor who knows how to lift others.

When we trade stereotypes for truths, we see courage where we once saw failure. We create room for every man to write a better story. Let’s show the world what recovery really looks like and help it grow, one person at a time.



5 Ways to Break the Stigma

Choose your words. Terms like “addict” or “alcoholic” aren’t always meant to harm, but they can reduce a person to a label. Instead, try using “substance use disorder.” Language shapes attitudes, attitudes shape policy.

Listen without judgment. Stigma fades when stories are heard. Ask, “How can I support you today?” — and mean it.

Share resources. Keep a local helpline or Welcome House’s intake link saved on your phone. Send it when someone needs a hand.

Invest in solutions. Volunteer a skill. Hire a resident. Make a monthly gift. Every dollar helps build a new life.

Speak up where you live. Encourage employers, schools, and faith communities to invite recovery speakers, revise policies, and offer second chances.



20 ANNUAL 24 GRATITUDE REPORT



Welcome House
Est. 1971

One year. Hundreds of lives changed. Hundreds of reasons we do what we do.

230 DAYS

AVERAGE LENGTH OF STAY FOR
GRADUATES OF WELCOME HOUSE
CORE RECOVERY PROGRAM.

64,840

MEALS SERVED FROM OUR
ON-SITE KITCHEN,
NOURISHING MINDS AND BODIES.

576

RESIDENT INTAKES

675

RESIDENTS
SERVED IN 2024
COMPARED TO
542 IN 2023.

RECOVERY SUPPORT
SPECIALISTS:

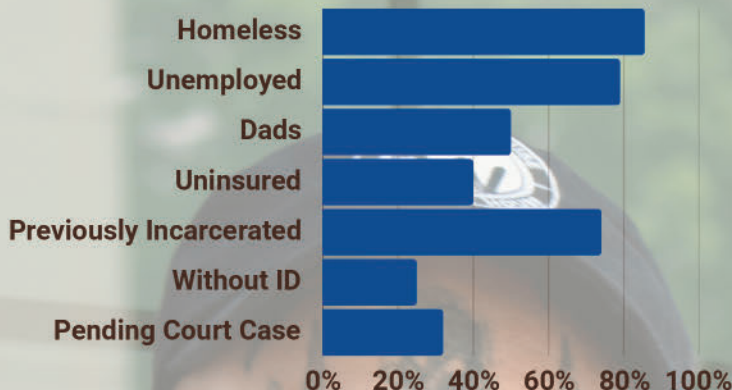
579

CLINICAL
ASSESSMENTS
COMPLETED

999

SERVICE PLANS
INITIATED

Who Are Our Residents

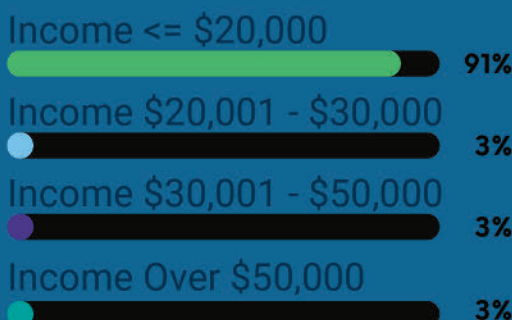


"The face of addiction may surprise you. So will the face of recovery."
-Timothy, resident

1,992

Number of 12-step meetings held on-site for Welcome House residents and Community members.

Income levels at in-take



1,584

REFERRALS TO 41
COMMUNITY AGENCIES
FOR A VARIETY OF
SERVICES
AND ASSISTANCE.



TOP REFERRAL PARTNERS OF 2024
University Health - Truman Behavioral Health | Swope Health Center | ReDiscover | KC CARE Clinic
| Comprehensive Mental Health services | Signature Behavioral Health | Samuel Rodgers
| Research Psychiatric Center

2024 - Another year of proving what's possible when recovery meets support.

1,748 DRUG TESTS (EXCLUDING NEGATIVE
BREATHALYZER TESTS)
ADMINISTERED TO RESIDENTS. OF
THESE DRUG TESTS, 74.35% ARE
NEGATIVE.

53% RESIDENTS WITH
SUBSTANCE USE DISORDER
OF BOTH DRUGS AND
ALCOHOL.

867 Foundations, Corporations,
Families and Individuals shared
gifts with Welcome House -
bringing our mission to life!

Graduation Rates



Since launching our CORE Recovery Program,
Welcome House has seen not just higher
graduation rates, but deeper engagement and
longer-term success.

Meeting Men Where They Are: The Partial Flex Program

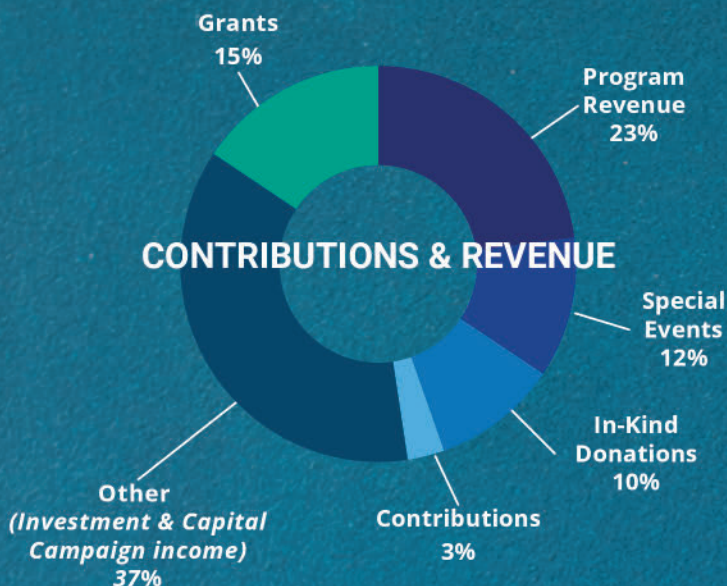
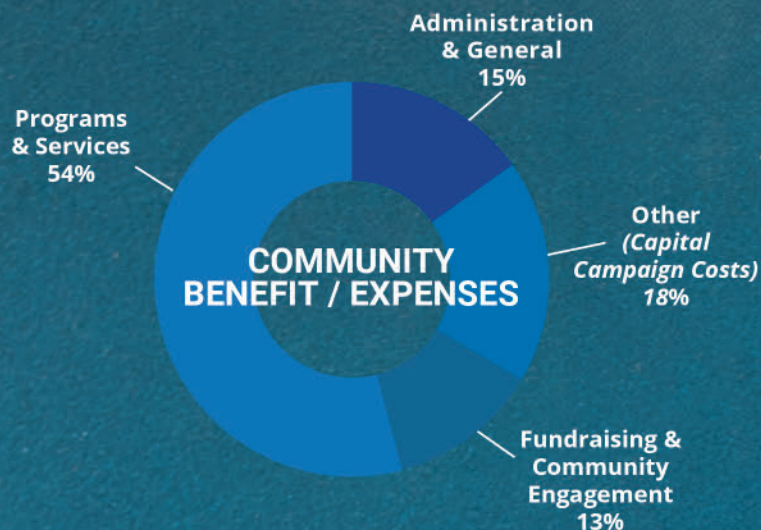
In 2024, Welcome House piloted the Partial Flex Program (PFP), a new recovery pathway offering "right-sized" support for men needing short-term, structured, and sober living. This flexible residency option mirrors our Core Program's structure but within a condensed timeframe of up to 4.5 months. With a 93% completion rate in its pilot year, the program is now a permanent part of our recovery services.

93%



**More than a number.
Each graduate represents a life
reclaimed, and a future rewritten.**

2024 FINANCIAL OVERVIEW



CONTRIBUTIONS & REVENUE

Program Revenue	\$893,754
Special Events	\$449,745
In-Kind Donations	\$401,116
Grants	\$610,048
Contributions	\$117,265
Other (<i>Investment and Capital Campaign Income</i>)	\$1,437,636

Total Income **\$3,909,564**

EXPENSES

Administration & General	\$479,723
Programs & Services	\$1,711,880
Fundraising & Community Engagement	\$392,921
Other (<i>Capital Improvements</i>)	\$580,779

Total Expenses **\$3,165,303**

*unaudited financials



We didn't just meet our goals — we raised the bar.

MIRACLE MOMENT THE CURNOW FAMILY

Each year, Welcome House presents the Miracle Award to individuals or families who exemplify the true spirit of Service to Others in Sobriety.

Welcome House is proud to honor The Curnow Family with the 2025 Miracle Award.

Their journey with recovery has not only transformed their own lives, but has also brought hope, opportunity, and second chances to countless men at Welcome House.

Randy Curnow's recovery journey began more than 40 years ago, and from the start, his family, including his wife Janie and their children Max and Madison, stood beside him with unwavering support and honesty. Over the years, the Curnows have made an extraordinary impact through board service, financial support, employment opportunities for men in recovery, and tireless advocacy for our mission.



2025 Miracle Award was presented to the Curnow Family. Pictured Left to Right: Max Curnow, Jamie Boyle, Welcome House CEO and Randy Curnow.

As Jamie Boyle shared during the presentation, "Families are not just bystanders in the process of overcoming addiction, they are active participants who can make a profound difference in the lives of their loved ones."

The Curnow family's story is one of perseverance, authenticity, and generosity. Their belief that "none of our blessings would be possible without recovery" continues to shine as a powerful example to our community.

Congratulations and heartfelt thanks to the Curnow Family for their service, their spirit, and their lasting impact on Welcome House!

NEED HELP? YOU'RE NOT ALONE.

If you or someone you know is struggling with substance use, mental health, or emotional distress, help is available.

WELCOME HOUSE

Support for men seeking recovery from substance use disorder

(816) 472-0760

welcomehousekc.org

988 SUICIDE & CRISIS LIFELINE

Free, confidential support for mental health, substance use, and suicide crises

Call or text 988

AA CENTRAL OFFICE (816) 471-7229

NA HELPLINE (800) 561-2250

Momentum built.
Milestones reached.
More men served.



Welcome House
1414 E. 27th Street
Kansas City, MO 64108-2924

US POSTAGE PAID
NON-PROFIT PERMIT
2658
KANSAS CITY, MO 64108



THANK YOU! 2025 BOARD OF DIRECTORS

ED WALSWORTH

Walsworth Publishing Co. | Board Chair

DAVID KISSICK

Kissick Construction | Vice-Chair

MAX CURNOW

Curnow Auto Group | Treasurer

RYAN SHRIVER

Johnston Fiss Insurance | Secretary

JAMIE BOYLE

Welcome House, Inc | President & CEO

CATI PIERSON-WOLFE

University Health | Member

BRIAN K. JOHNSON

mPulse | Member

SARA JACKSON

RADAC | Member

JONATHAN SPECHT

Cumulus | Member

COLLEEN CASHEN

TMS, Inc. | Member

FRANK YAGER

Heartland Traffic | Member

WES BENSON

Wes Benson Art | Member

KENDALL GAMMON

Pittsburg State University | Member